

■ Troubleshooting guide

Problem	Causes	Comments and suggestions
Physical damage of the kit	Upside down during transportation may cause beads to stick with sealing film	Spin down the 'Cartridge' by hand before open it.
	Insufficient reagent volume due to evaporation or lifting of the sealing film	If reagent volumes are insufficient, extraction efficiency may decrease. Do not use it and contact customer service immediately.
	Broken 'Cartridge'	Do not use it and contact customer service immediately.
Inappropriate specimen condition	Specimen condition is not favorable due to inappropriate storage condition (ex. coagulation)	Perform vortex and pipetting of specimen. If sample is still coagulated, add a bit of PBS or distilled water and vortex again.
	Specimen condition is abnormal due to inappropriate storage condition (ex. stored in room temperature)	Increase sample volume up to 300 µl, if extraction efficiency is low.
Abnormal extraction	Too much beads left in Elution buffer	If the genomic DNA density is within the normal range, proceed with the eluted solution. In the case of low genomic DNA density, transfer the eluted solution to a 1.5 ml tube and centrifuge before use.
	Eluted total nucleic acid should not appear transparent or sticky	Refer to 'Inappropriate specimen condition' part of trouble shooting if specimen condition is abnormal, perform extraction again. If the specimen condition and genomic DNA density are normal, proceed with the extracted genomic DNA. In cases where the specimen condition is normal but the genomic DNA density is too sticky, transfer the eluted solution to 1.5 ml tube and dilute it with distilled water before use.

■ Warnings and precautions

- Intended for in vitro diagnostics.
- Intended for professional use only.
- Read and follow the Instruction for Use (IFU) before using the product.
- Use extracted nucleic acid as soon as possible, if long-term storage is needed, store it below -70 °C.
- Be cautious of contaminants such as microorganisms after opening the product.
- Be sure to wear personal protective equipment such as gloves and goggles when using this product and wash hands after handling specimens and reagents.
- Avoid contamination with DNase during product use.
- Store the product at the specified storage temperature and do not use it beyond its expiration date.
- Read and follow the IFU for the nucleic acid extraction device (AllEx® Mini Automated Nucleic Acid Extraction System) used with this product.
- Do not dispose of reagents from this product with bleach or acidic substances, as they contain irritants.
- This product is a single use and should not be reused.

* A notice to the user that any serious incident that has occurred in relation to the device should be reported to the manufacturer and the competent authority of the Member State in which the user and/or the patient is established.

■ Storage conditions

- Temperature : 15 °C to 25 °C
- Relative humidity : 20 % to 80 %

GeneAll Bldg., 303-7 Dongnam-ro, Songpa-gu, Seoul, 05729, Republic of Korea
E-mail : sales@geneall.com
Tel : 82-2-407-0096 Fax : 82-2-407-0779

Factory

A-1201~A-1204, Hanam Techno Valley U1 Center, 947,
Hanam-daero, Hanam-si, Gyeonggi-do, 12982, Republic of Korea

GENEALL BIOTECHNOLOGY CO., LTD.

©2025 GeneAll Biotechnology, All rights reserved

Symbol	Used for	Symbol	Used for
	Batch number		Manufacturer
	Catalogue number		Do not re-use
	Consult instructions for use		Date of manufacture
	Caution		Expiry date
	Temperature limit		

2025.03

www.geneall.com

Ver. 1.0

GeneAll®

Store between 15 °C and 25 °C
Expiration date: Refer to the product box label

AllEx® Mini
Plant DNA Kit

■ Description

The AllEx® Mini Plant DNA Kit is a specialized nucleic acid extraction reagent designed for use with the AllEx® Mini Automated Nucleic Acid Extraction System (AllEx® Mini). The Kit protocols are optimized to extract genomic DNA using AllEx® Mini Cartridge, which can extract up to 12 sample at once. Each cartridge comes preloaded with essential reagents, enabling dependable and efficient nucleic acid extraction while minimizing user effort.

■ Intended purpose

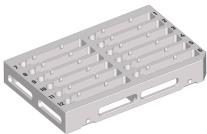
AllEx® Mini Plant DNA Kit provides fast and easy methods for the purification of genomic DNA from various plant samples such as leaf, seed, and bark using AllEx® Mini Automated Nucleic Acid Extraction System. The extracted genomic DNA is of excellent quality and suitable for most downstream applications including PCR, qPCR, or any other downstream application.

■ Kit contents

Components	979-048
Number of preparation	48 preps/kit
Reagents pre-filled cartridge	6 pks
Buffer SQ1 30 ml	1 ea
RNase A (20 mg/ml) 500 µl	1 ea

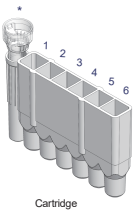


Cartridge



Cassette

■ Brief workflow



- Lysis buffer
- Washing buffer I
- Washing buffer II
- Washing buffer III + bead

[Note] If particles are not visible in well 4, shake down the cartridge to dislodge particles that may have adhered to the seal material before removing the seal.

- Elution buffer
 - Washing buffer IV
- * Strip

- AllEx® Mini Cartridge is designed for low throughput, allowing flexible processing of up to 12 individual samples.
- The Strip pocket has a Strip that keeps the magnet safe from magnetic beads while making sure samples and reagents mix well.
- Six consecutive wells are aligned horizontally, each containing specific reagents for extraction.
- The first well contains lysis buffer that breaks down cell membranes and releases DNA and RNA.
- To prevent damage, the magnetic beads are placed in the fourth well until the extraction process begins, at which point the AllEx® Mini transfers them to the first well. The second, third, fourth, and sixth well contain washing buffer I, II, III, and IV, which remove unwanted cellular components and residual buffers. Finally, the elution buffer in the fifth well separates DNA from the magnetic beads, completing the extraction process.

■ Protocol

The kit includes three protocols, allowing selection based on the specific extraction purpose.

Protocol	Uses and purpose
P1 Protocol (18 min 27 s)	• Rapid, efficient and PCR-compatible nucleic acid extraction
P2 Protocol (27 min 13 s)	• Optimized protocol for nucleic acid extraction from various leaf, root, bulb, and bark samples
P3 Protocol (28 min 34 s)	• Protocol for High-quality nucleic acid extraction from seed and leaf samples • Optimized protocol for nucleic acid extraction from starch-enriched seed samples

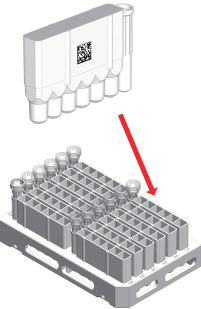
A. Seed / Bark

1. Grind up to 100 mg of sample to a fine powder completely using a homogenizer.
2. Add 400 to 600 µl Buffer SQ1 and vortex vigorously for 30 s.
3. Centrifuge at 13,000 rpm for 10 min at 4 °C.
4. Transfer 200 µl of sample to 1st well.
5. Dispense 10 µl of RNase A to 3rd well.

B. Leaf

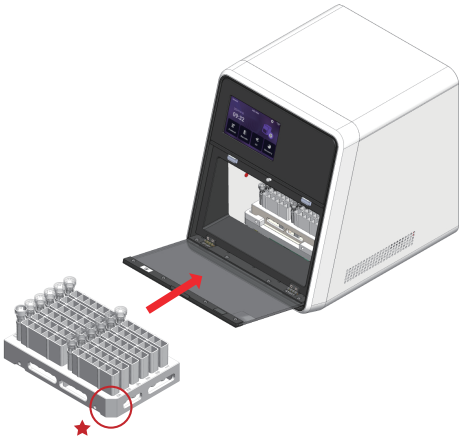
1. Grind up to 150 mg of sample to a fine powder completely using a homogenizer.
2. Add 400 to 600 µl Buffer SQ1 and vortex vigorously for 30 s.
3. Centrifuge at 13,000 rpm for 10 min at 4 °C.
4. Transfer 200 µl of sample to 1st well.
5. Dispense 10 µl of RNase A to 3rd well.

■ Preparation of Cartridge

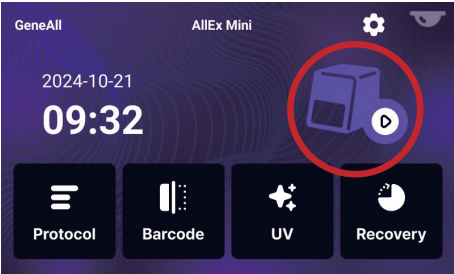


1. Insert up to 12 Cartridges in the desired quantity, starting with position number 1 indicated on the Cassette.
3. Remove the sealing film.
4. Follow the protocol for starting sample type.

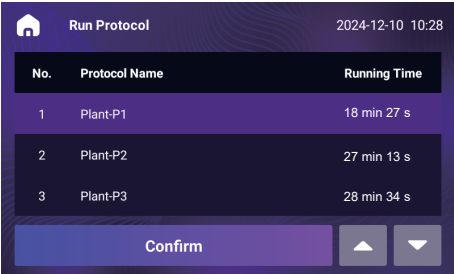
■ System run



1. Load the Cassette with the inserted Cartridges into the AllEx® Mini, ensuring the diagonally cut edge faces the system door.

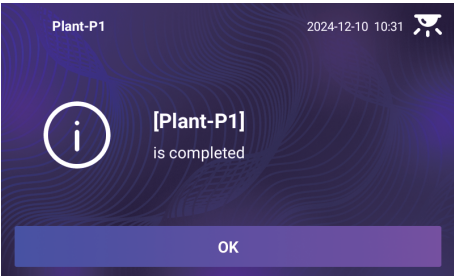


2. Tap the play icon to scan the barcode on the Cartridge.



3. The built-in Barcode reader reads the Cartridge barcode, selects protocol and displays the protocol lists. Select the protocol from the list based on uses and purposes.
4. Tap 'Confirm' to start extraction.

■ End of run



1. Once extraction is complete, tap 'OK' to return to the main menu.
2. Open door and check whether the Strip is correctly placed in the Strip pocket.
3. Remove the Cassette from AllEx® Mini.
4. Regular UV sterilization eliminates bacteria and virus, minimizing internal pollution within the system.
Before/after the extraction, close the door and proceed with UV sterilization as a decontamination activity.
The sterilization will continue for 10 min.